



Coffee Brief

Date: 6.24.2025

Preparedness Levels & Alaska Fire Activity

Alaska	4
National	3

Light Initial Attack Activity New Fires and Acres: 6 fires for ~141 acres
--

There are currently 21 staffed fires and 3 Complexes. Yesterday's large fire growth was ~54,701 acres

Sources: National and AICC Situation Dashboard, AICC Aircraft Logs

Prioritized Incident Details

ALASKA MAC GROUP PRIORITIES – DECISION 6/23/2025	
1. Initial Attack	
2. #237 - Bear Creek (CIMT AK 1 to c 6/24 @ 0700), FAS	
3. #223 - Himalaya Road (CIMT SW 3 inbrief 6/23 1600), FAS	
4. #222 - Seven Mile Lookout (IMT3 inbrief 6/24), TAS	
5. 2 fires - Nenana Ridge Complex, FAS	
6. 7 fires - Ptarmigan Complex, UYD	
7. 6 fires - Roundabout Complex (IMT3 Ordered), GAD	
8. #309 - Birch Lake, FAS	
9. #220 - Twelvemile Lake (IMT3 inbrief 6/25), DAS	
10. #218 - Ninetyeight, MID	
11. #306 - Nakochelik, GAD	
12. #207 - Nikolai, GAD	

Resources

Aviation within Alaska	Total
Smokejumpers	~18 available
Air Tactical	5
Air Tankers	3
Scoopers	2
Single Engine Scoopers	6
Utility	2
Helicopter, Type 1	3
Helicopter, Type 2	10
Helicopter, Type 3 Standard	14
UAS	2
Total Aircraft	19

Crews Committed within Alaska	Total
Type1 / IHC	3
Type 2 IA	4
Type 2	5
Total Crews	12

AIRSPACE/TFRs

Bear Creek

Seven Mile Lookout

Billy Creek

Nelchina Glacier

Anticipate two additional later today

SMOKEJUMPERS

Anticipated smokejumpers available: ~18

~ 95 SMKJ's committed + 3 as single resources – DIVS to Canada

Smokejumper Demobilizations

Yesterday: 0

Planned for today: ~12 later today

CREWS

Pending Orders at AICC

Crew Requests	Total
CR1I - Crew, Type 1 or 2 IA	13
CR2A - Crew, Type 2 Any	2
CR2I - Crew, Type 2 IA	1
CRW1 - Crew, Type 1	9
CRW2 - Crew, Type 2	10
CRWA - Crew, Type Any	6
Grand Total	41

CREW JET MOVEMENT

2025 Lower 48 Crews to Alaska											
Jet #1		Jet #2		Jet #3		Jet #4		Jet #5		Jet #6	
MOB	6/23	MOB	6/25	MOB	6/27	MOB		MOB		MOB	
LWD		LWD		LWD		LWD		LWD		LWD	
DMOB		DMOB		DMOB		DMOB		DMOB		DMOB	
CRW1 PLUMAS IHC		ZIG ZAG IHC		Big State Wildfire							
CRW1 Smith River IHC		OWF Methow		A.S.I Arden Solutions 12A							
CRW1 Mendocino IHC		PatRick Environmental, Inc. NCC		A.S.I. Arden Solutions 12B							
CRW1 Tallac IHC		Central Oregon		PatRick Environmental, INC NCC 14C							
				PatRick Environmental, INC NCC 18A							

OVERHEAD/TEAMS

- 29 to start the day
- 1 T3 IMT Order pending for Roundabout Complex

- 1 CIMT assigned to the Bear Fire

Source: IROC Reports, [National Smokejumper Status Report](#), AK Incident Aircraft Tracking Spreadsheet & AICC Documentation

Weather Summary

Southeasterly flow will continue to moderate conditions across the state. Though a little cooler, 70-degree temperatures may still be seen across much of the Interior this afternoon. The hottest and driest conditions are reserved for the Yukon Flats, with temperatures in the 80s.

However, RHs are moderating with lowest values generally above 40 percent. Winds will remain mostly light.

Easterly waves will push more moisture through the mainland from southeast to northwest. Today's waves will kick off more thunderstorms and heavier rainfall from the ALCAN border through Fortymile Country over to Circle, though isolated thunderstorms will be possible around much of the northern half of the state. Storms may still have vigorous lightning but will have more moisture than we've seen in the last week.

Precipitation will be spotty where storms are isolated. Wednesday promises a bigger, wetter wave of moisture for the mainland.

Throughout the week, low pressure in the Gulf of Alaska continues to cutoff the high to the north. This will allow more aggressive easterly waves to move through the state, bringing more substantial wetting rains and a few thunderstorms to the eastern half of the state. Though the western side is likely to stay drier, some rain will work its way into the western Interior at times. The driest area is likely to be the northeastern Interior. Winds may be breezy for some periods as the gradient tightens between the high to the north and low to the south.

Confidence more than four days out is low. At this point, it looks like the pattern stagnates with this southeasterly flow, keeping cooler and damper weather into the weekend.

Fuels:

Much of the southern half of the state, including the southern Interior, will continue to see moderation of indices today. The main focus for fire potential remains in the Upper Yukon and in the southern part of the Copper River Basin. FFMCS, ISIs, FWIs, and Adjective Ratings all key in on these areas with highest concern on the east side of the Yukon Flats. Vapor Pressure Deficit reveals only a small sliver of drought stress in that same area. However, with smoke cover and increased cloudiness, fire activity will continue to decrease this week.

Today, the footprint for most active lightning will be from the central Brooks Range southeastward to the Yukon-Tanana Uplands. Expect ample moisture with these storms, which will prohibit new ignitions from showing up, at least initially.

Source: National Weather Service

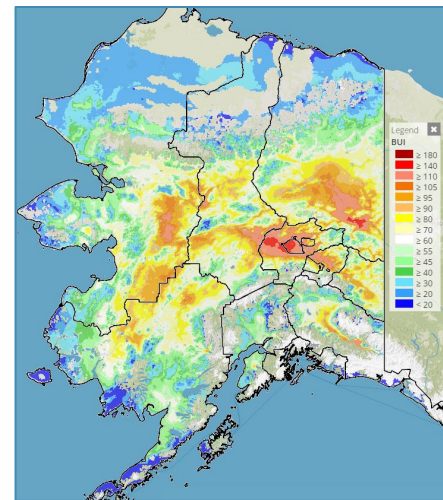
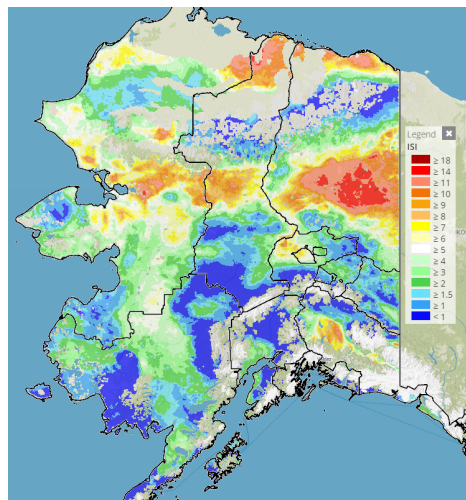
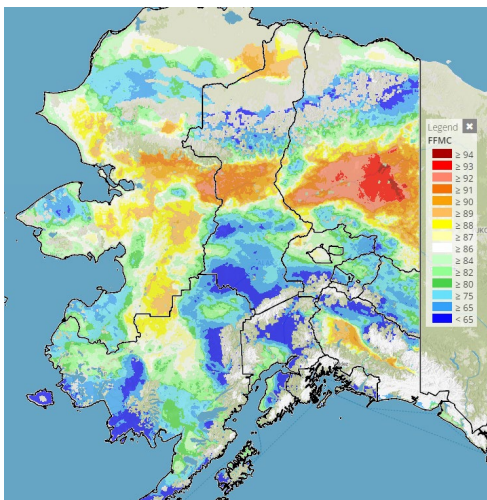
Fuels Status [Alaska Fire and Fuels Map](#)

Fuels/Fire Potential

- The Yukon Flats and regions south of the Brooks Range exhibit the highest levels of fine fuel and ISI indices, signaling a considerable potential for ignition and rapid spread.

- The subsurface duff layer (BUI) remains extremely dry across much of the interior, indicating that these areas are receptive to lightning ignitions and retain significant fuel loads available for combustion.

- Fine fuels are predicted to drop to levels which are unable to support surface spread for a large portion of the interior beginning Tuesday.



When encountering a mismatch between a point value based on actual weather observations and the background grid, please discount the grid and go with the points.

For additional fuels information visit <https://akff.mesowest.org/>

Sources: AICC Predictive Services – [Fuels/Fire Danger](#) web page, [Alaska Fire & Fuels](#) web page, Nathan Perrine AICC Analyst

The Coffee Brief is posted at PLs 4 and 5 only.

